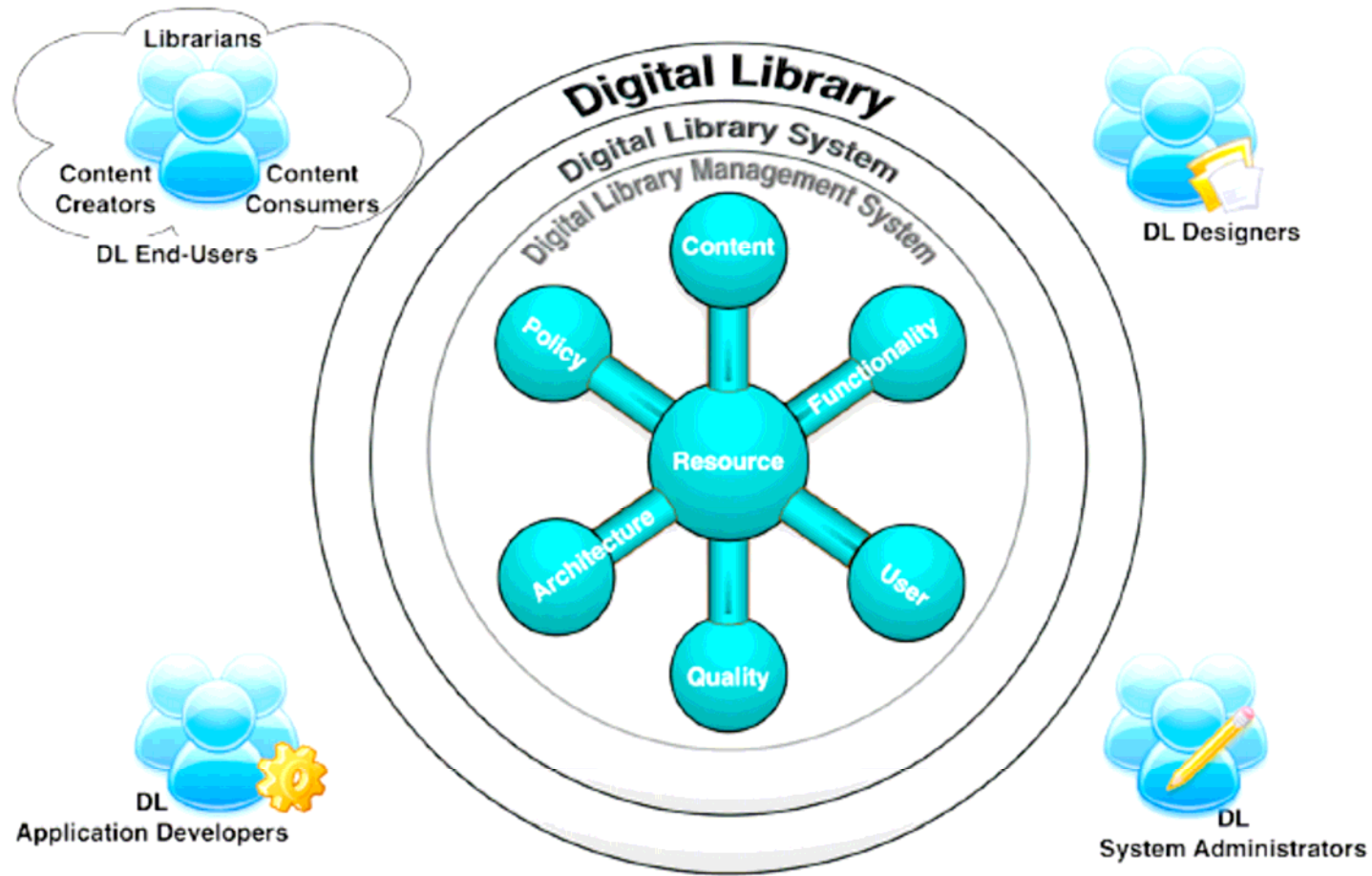


# A Conceptual Model for Digital Libraries

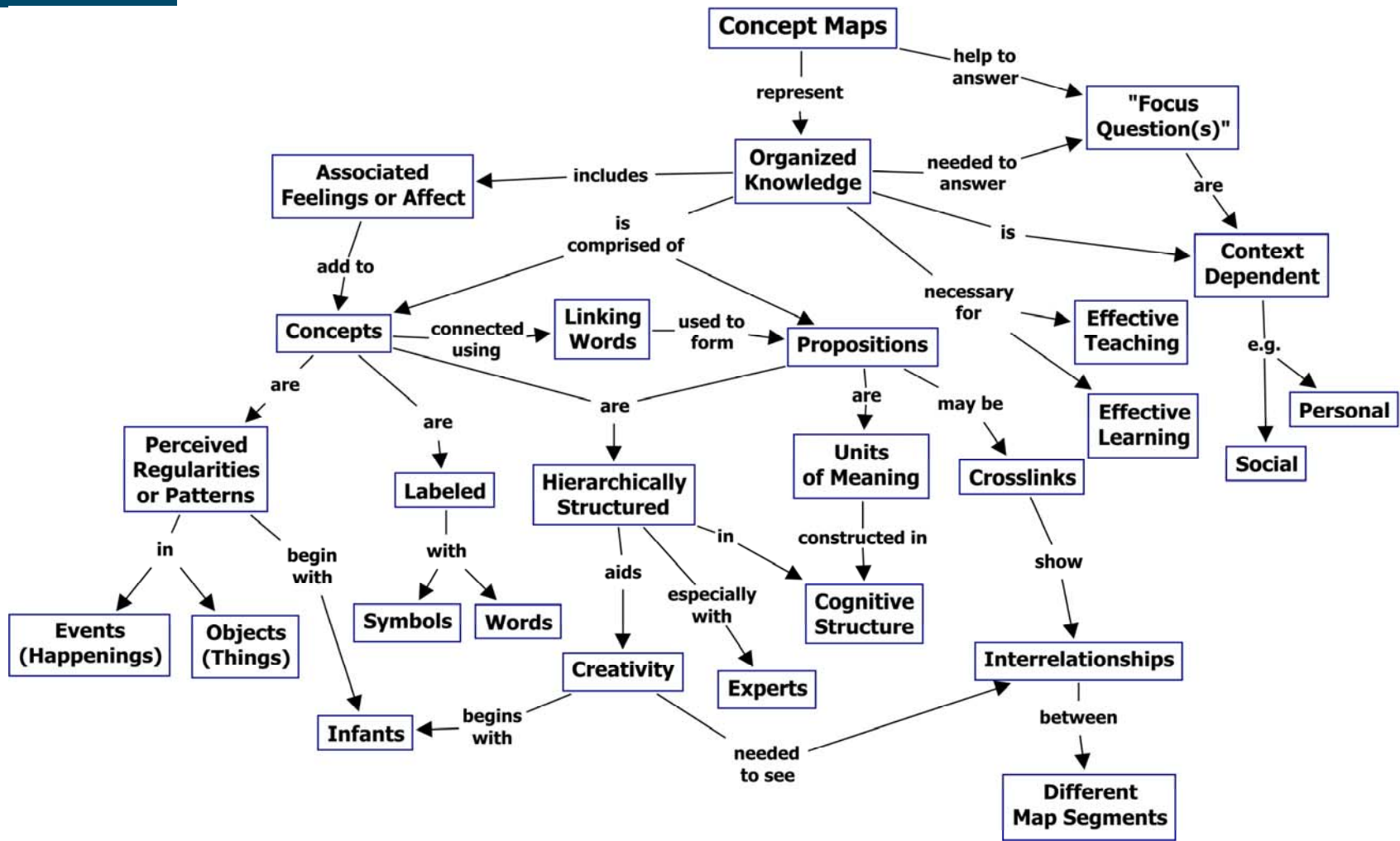
Vittore Casarosa  
University of Parma and  
ISTI-CNR, Pisa, Italy

NMPLIS Summer School  
5-16 July 2010, Tbilisi, Georgia

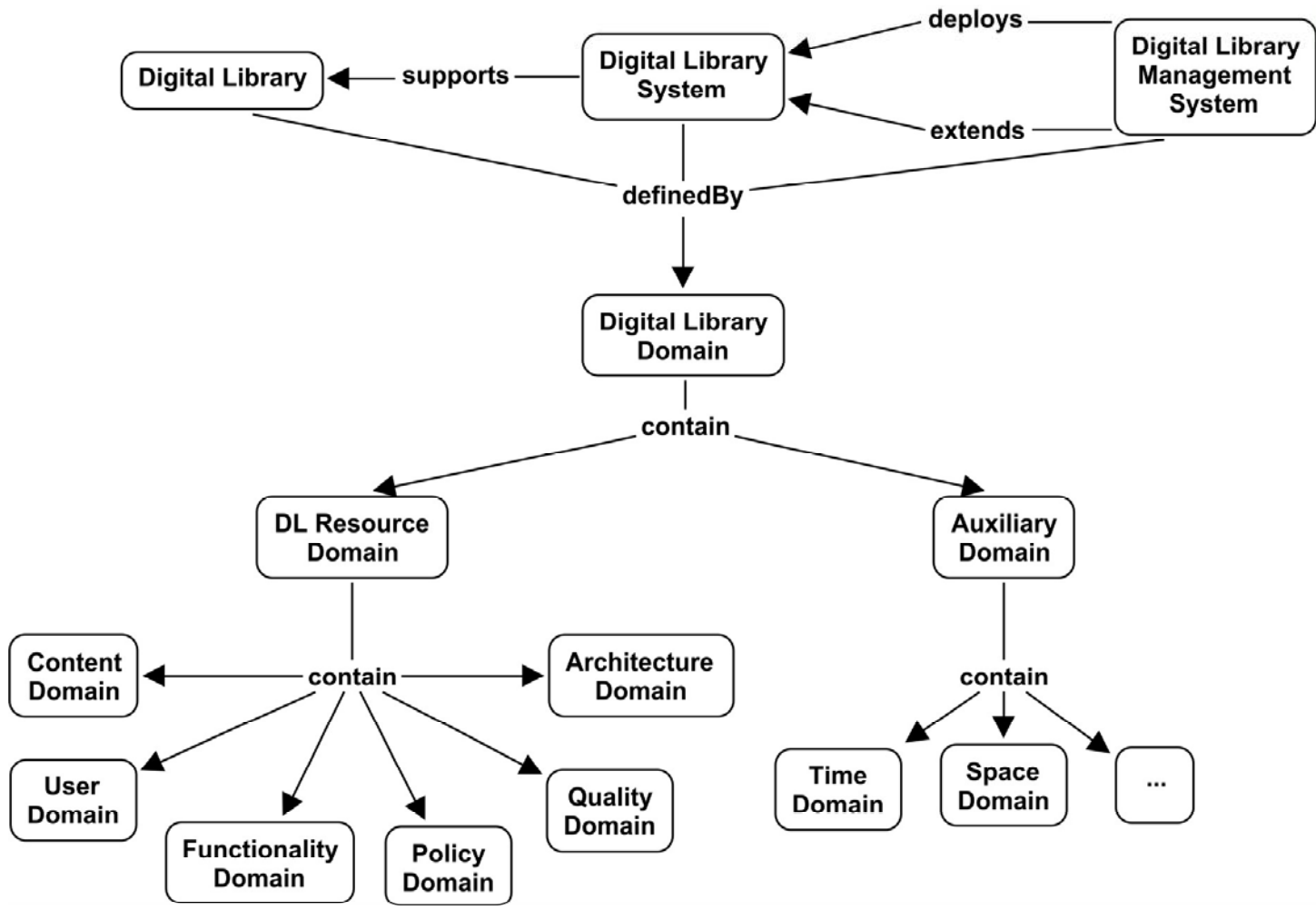
# The Reference Model



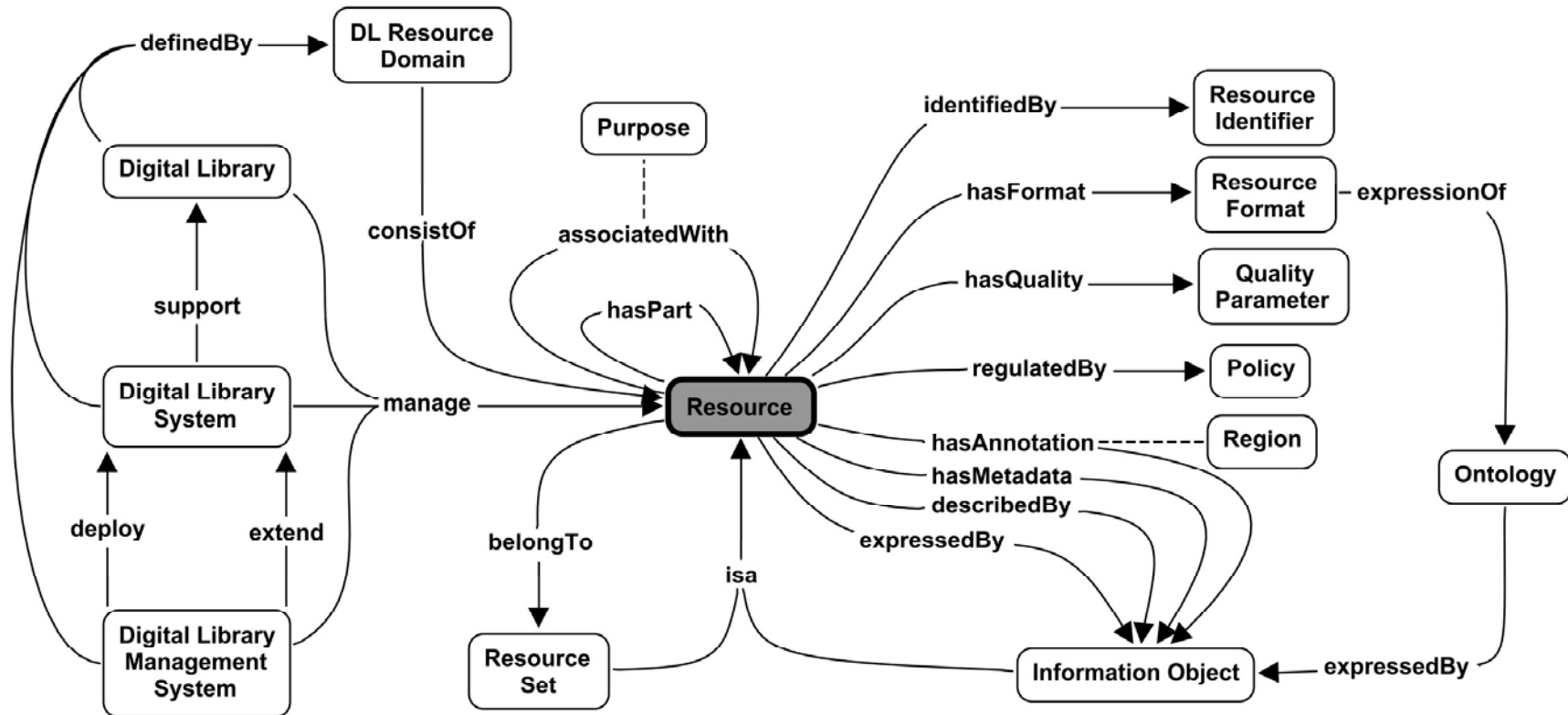
# Concept Maps



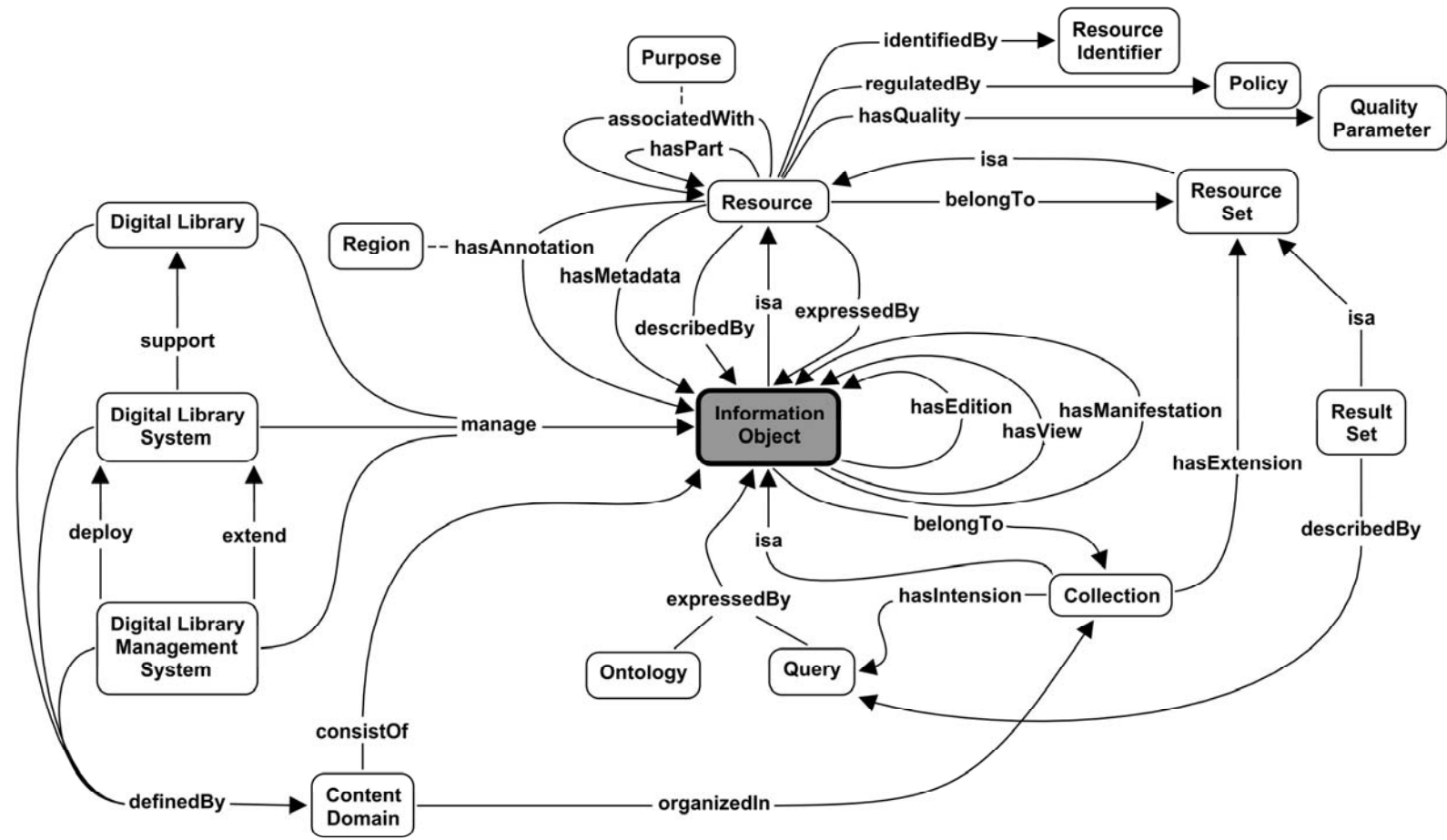
# Digital Library Domains



# The Resource Domain

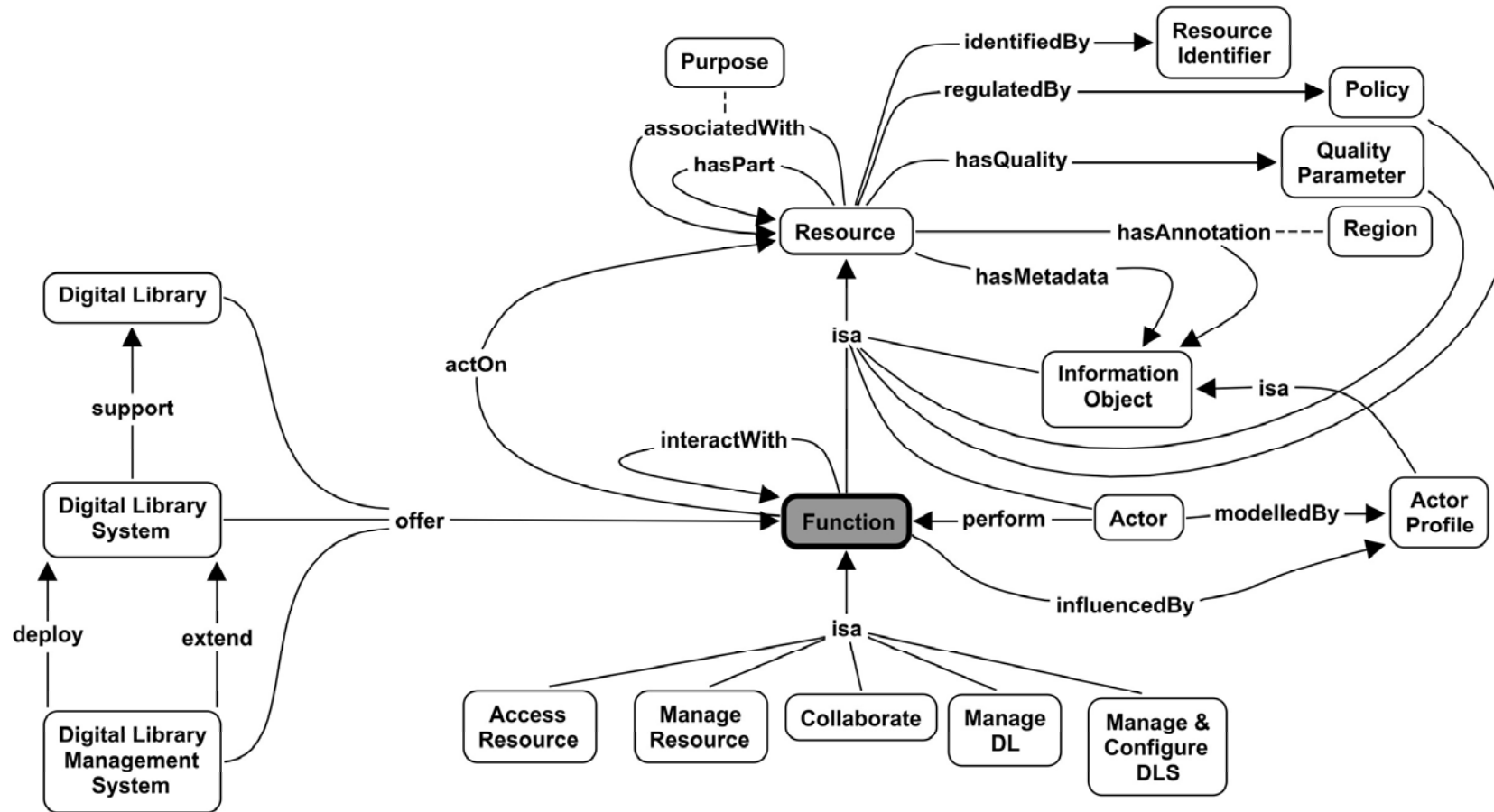


# The Content Domain





# The Functionality Domain





## Main functions

### C32 Access Resource

C33 Discover

C34 Browse

C35 Search

C36 Acquire

C37 Visualize

### C38 Manage Resource

C39 Create

C40 Submit

C41 Withdraw

C42 Update

C43 Validate

C44 Annotate

C45 Manage Inform Object

C64 Manage Actor

C71 Manage Function

C72 Manage Policy

C73 Manage Quality Parameter

### C74 Collaborate

C75 Exchange Information

C76 Converse

C77 Find Collaborator

C78 Author Collaboratively

### C79 Manage DL

C80 Manage Content

C85 Manage User

C90 Manage Functionality

C92 Manage Quality

C93 Manage Policy Domain

### C94 Manage & Configure DLS

C95 Manage DLS

C104 Configure DLS

# Manage Information Object

- C46 Disseminate
  - C47 Publish
- C48 Author
  - C49 Compose
- C50 Process
  - C51 Analyze
    - C52 Linguistic Analysis
    - C53 Qualitative Analysis
      - C54 Examine Preservation State
    - C55 Statistical Analysis
    - C56 Scientific Analysis
    - C57 Create Structured Representation
    - C58 Compare
  - C59 Transform
    - C60 Physically Convert
      - C61 Translate
    - C62 Convert to a Different Format
    - C63 Extract

## Manage Actor

- C65 Establish Actor
  - C66 Register
    - C67 Sign Up
  - C68 Login
- C69 Personalise
  - C70 Apply Profile

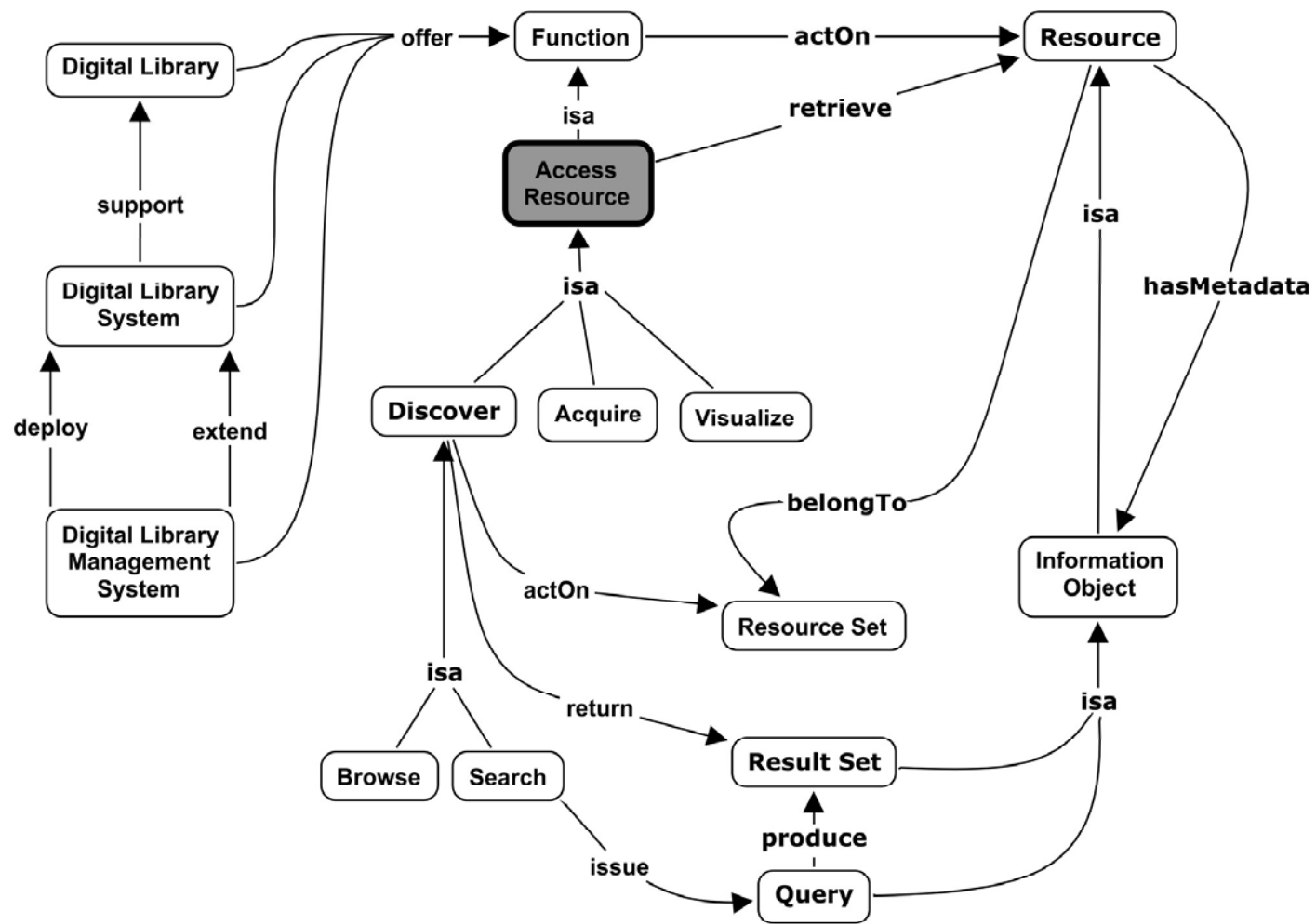
# Manage DL

- C80 Manage Content
  - C81 Manage Collection
    - C82 Import Collection
    - C83 Export Collection
  - C84 Preserve
- C85 Manage User
  - C86 Manage Membership
  - C87 Manage Group
  - C88 Manage Role
  - C89 Manage Actor Profile
- C90 Manage Functionality
  - C91 Monitor Usage
- C92 Manage Quality
- C93 Manage Policy Domain

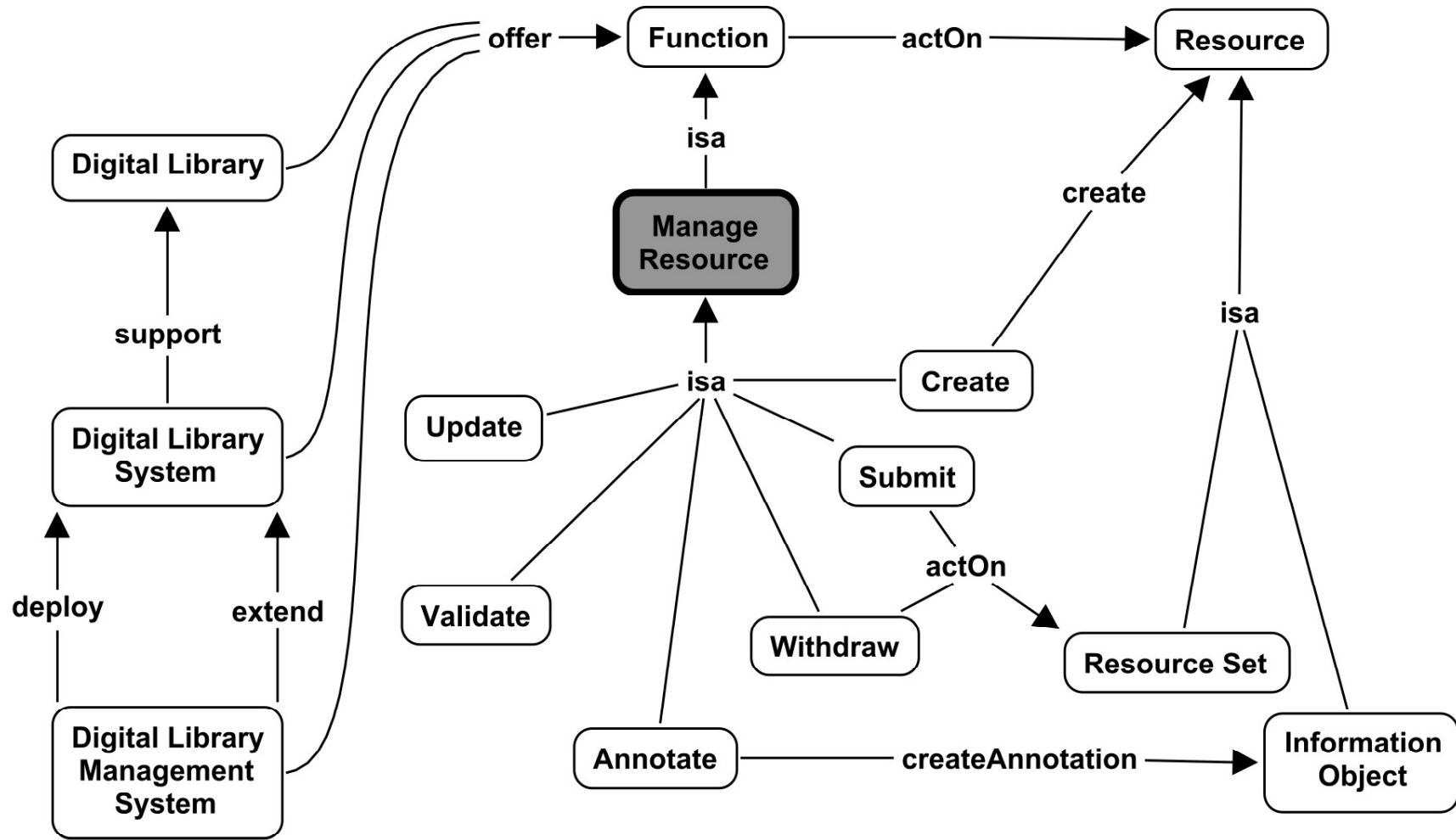
## Manage & Configure DLS

- C95 Manage DLS
  - C96 Create DLS
  - C97 Withdraw DLS
  - C98 Update DLS
  - C99 Manage Architecture
    - C100 Manage Architectural Component
    - C101 Configure Architectural Component
    - C102 Deploy Architectural Component
    - C103 Monitor Architectural Component
- C104 Configure DLS
  - C105 Configure Resource Format
  - C106 Configure Content
  - C107 Configure User
  - C108 Configure Functionality
  - C109 Configure Policy
  - C110 Configure Quality

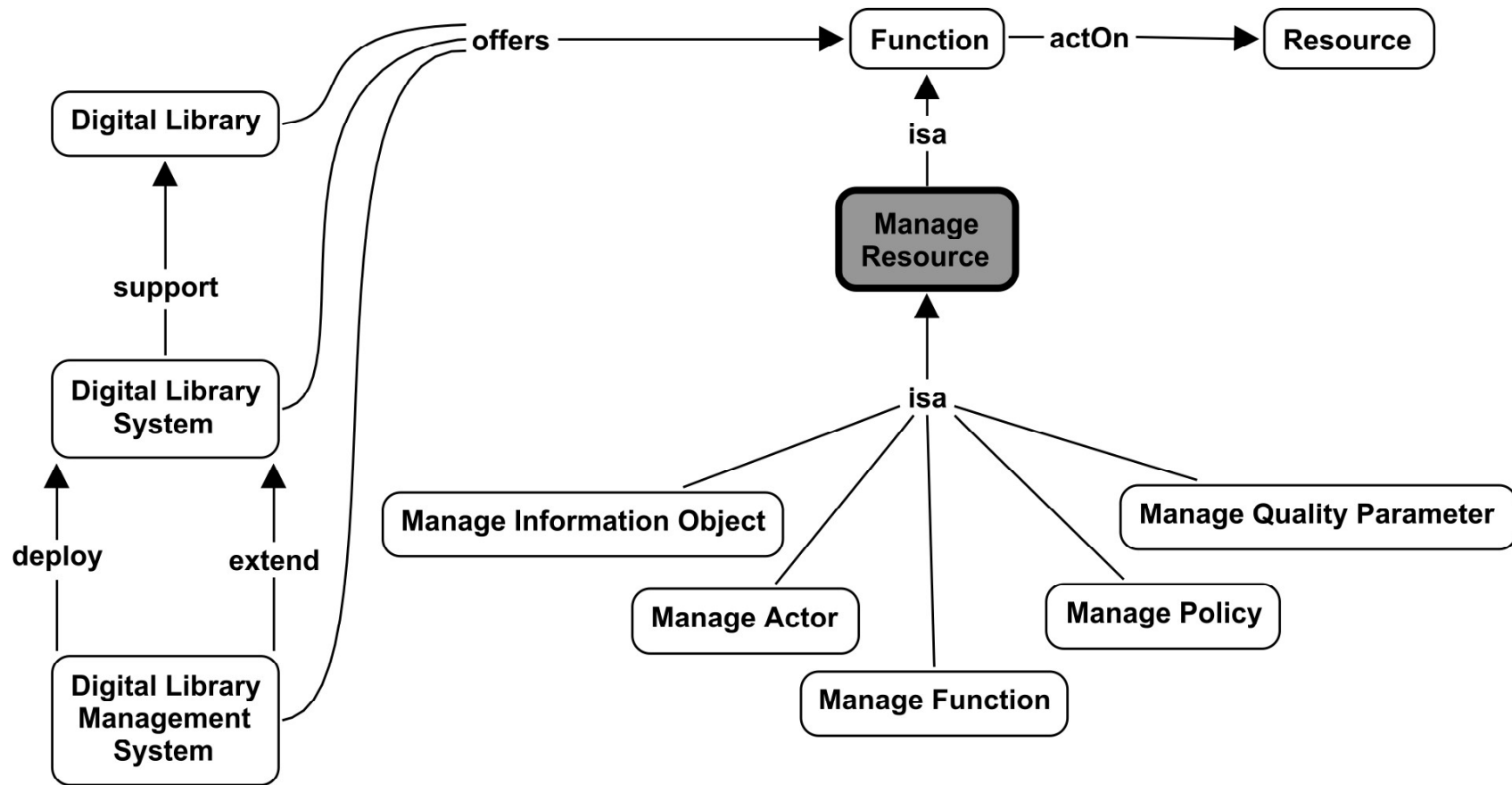
# Access Resource



# Manage Resource (1)

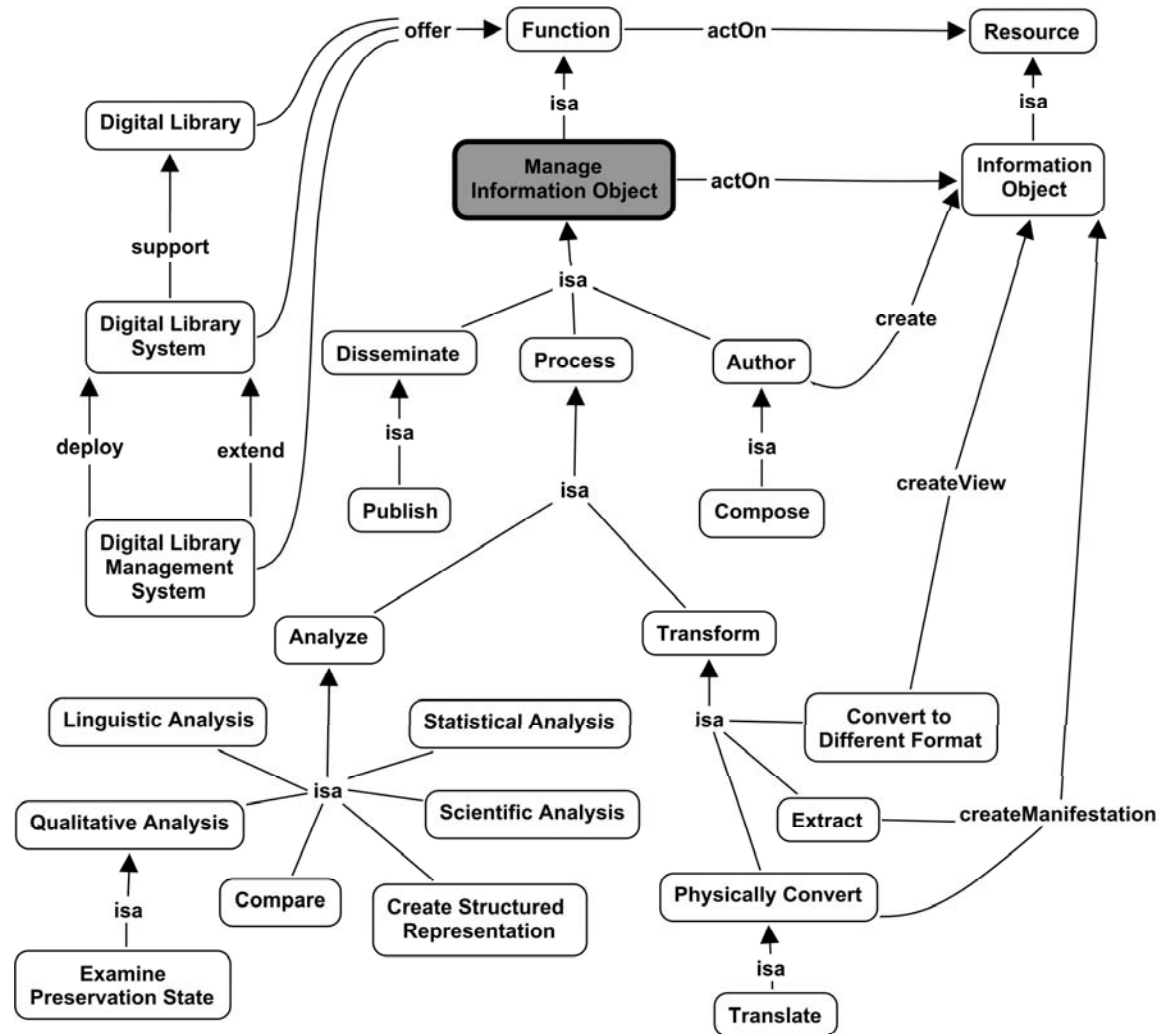


# Manage Resource (2)

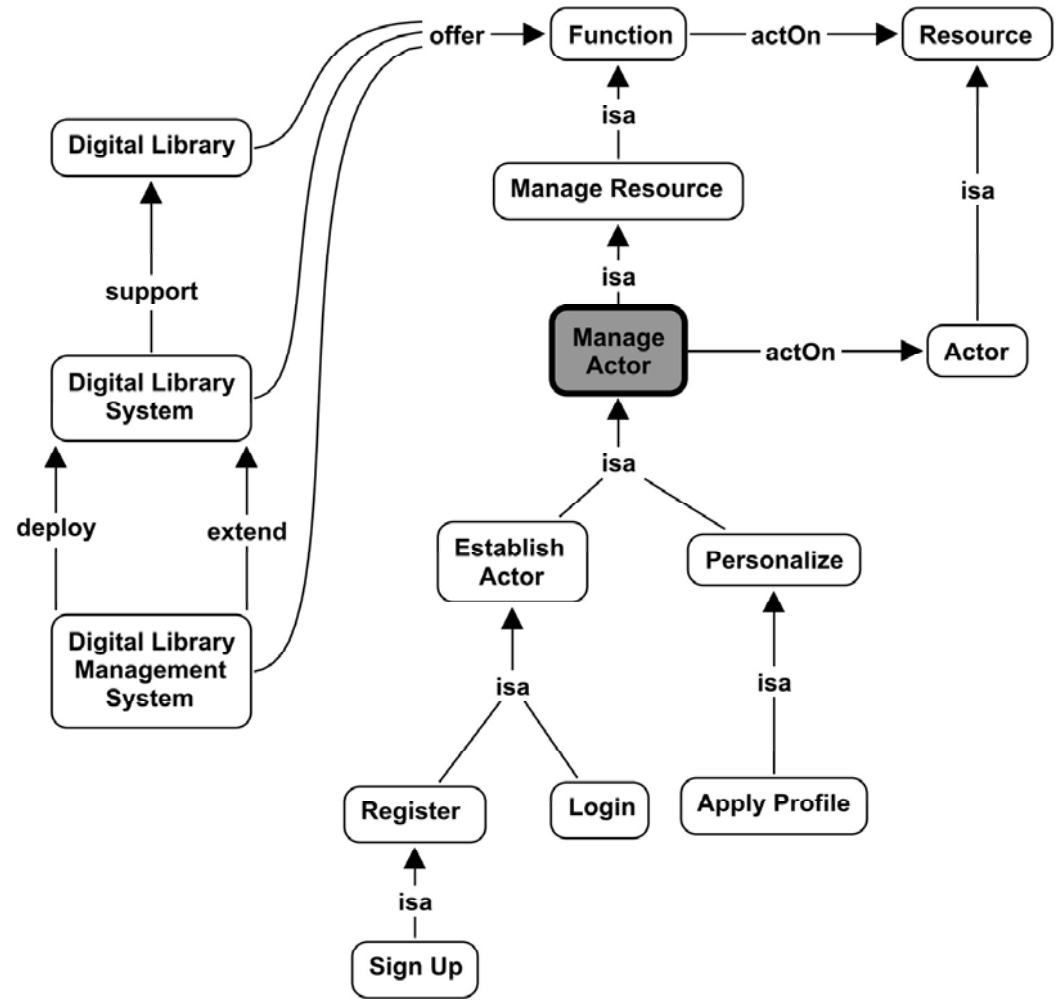




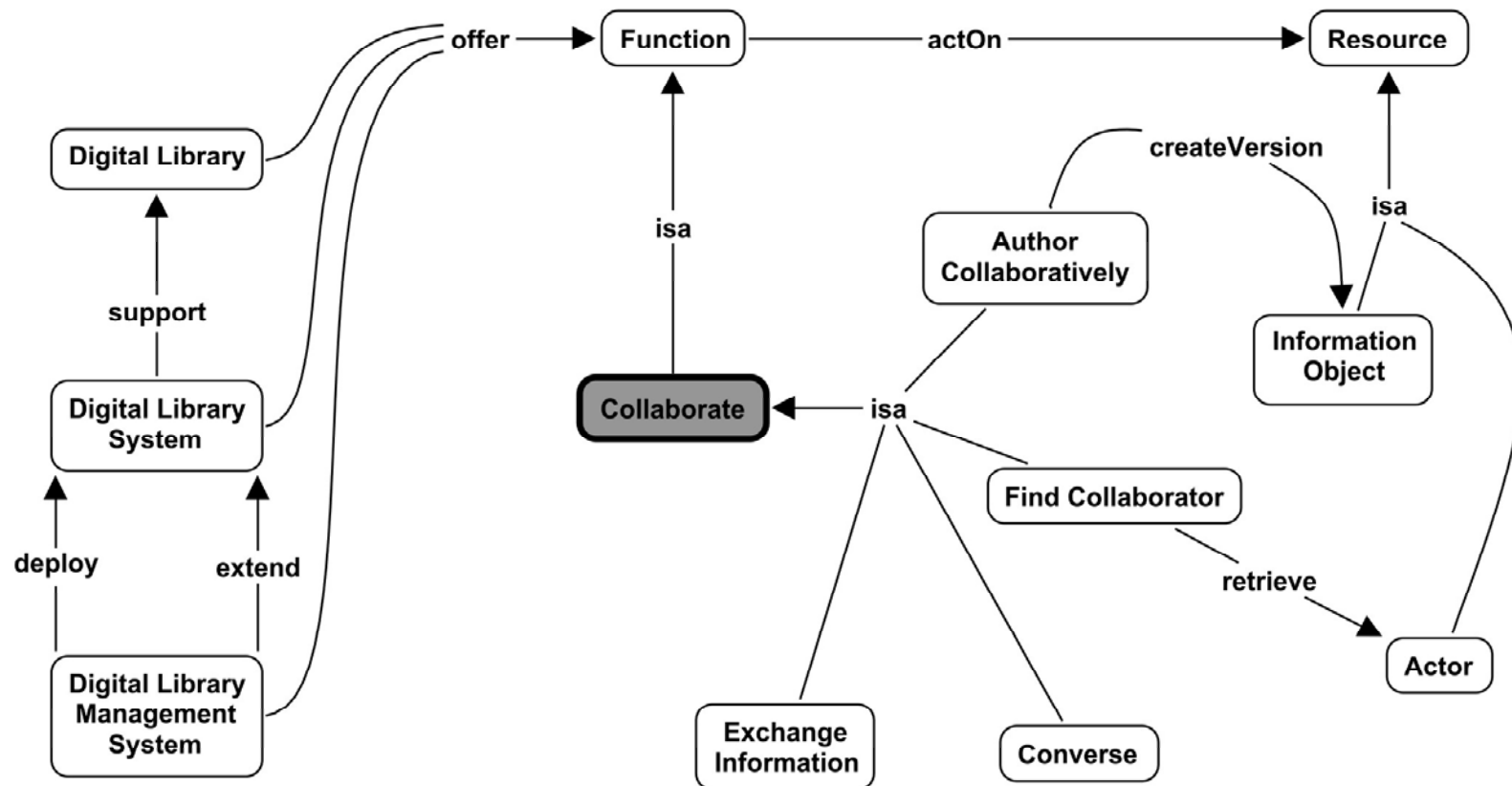
# Manage Information Object



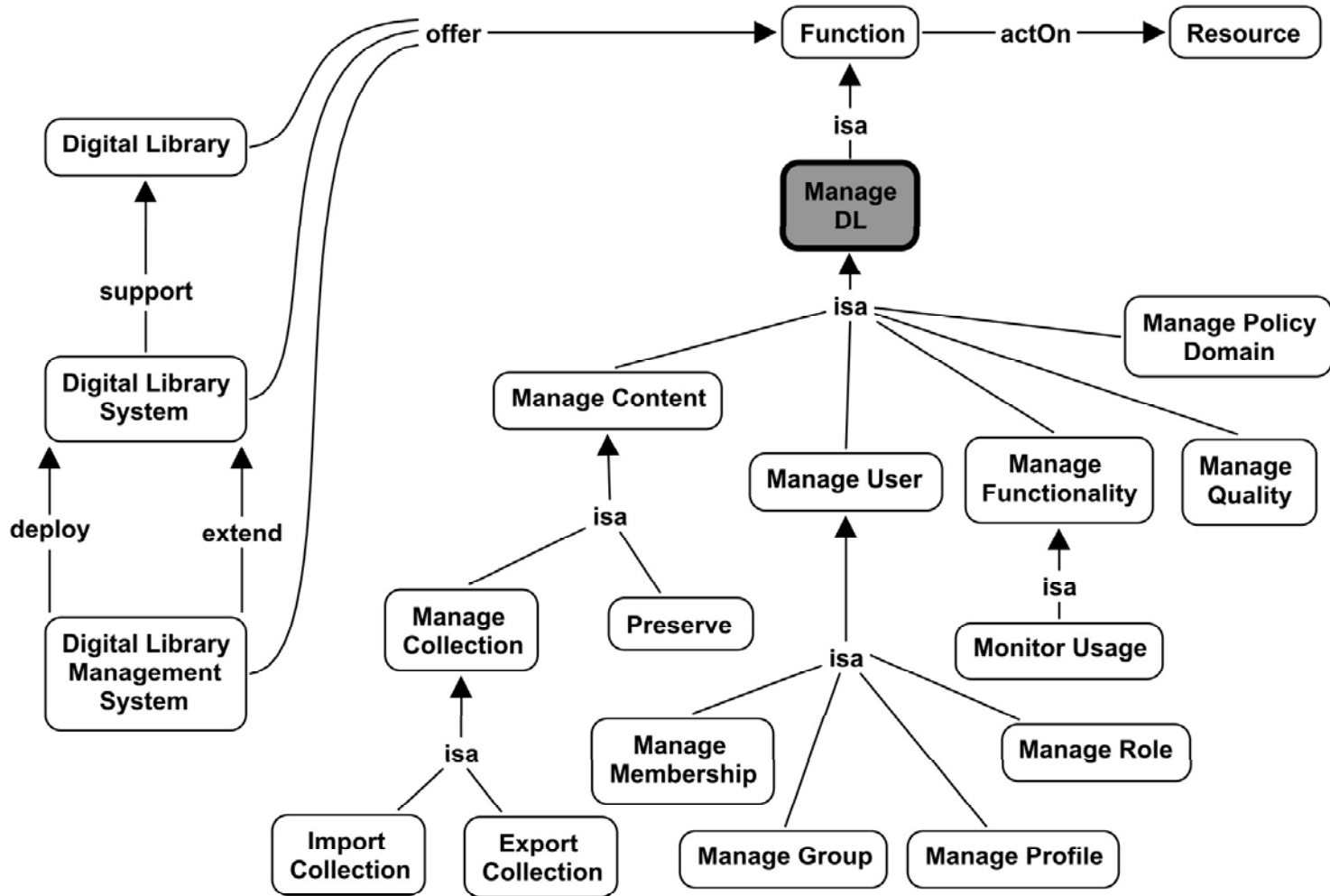
# Manage Actor



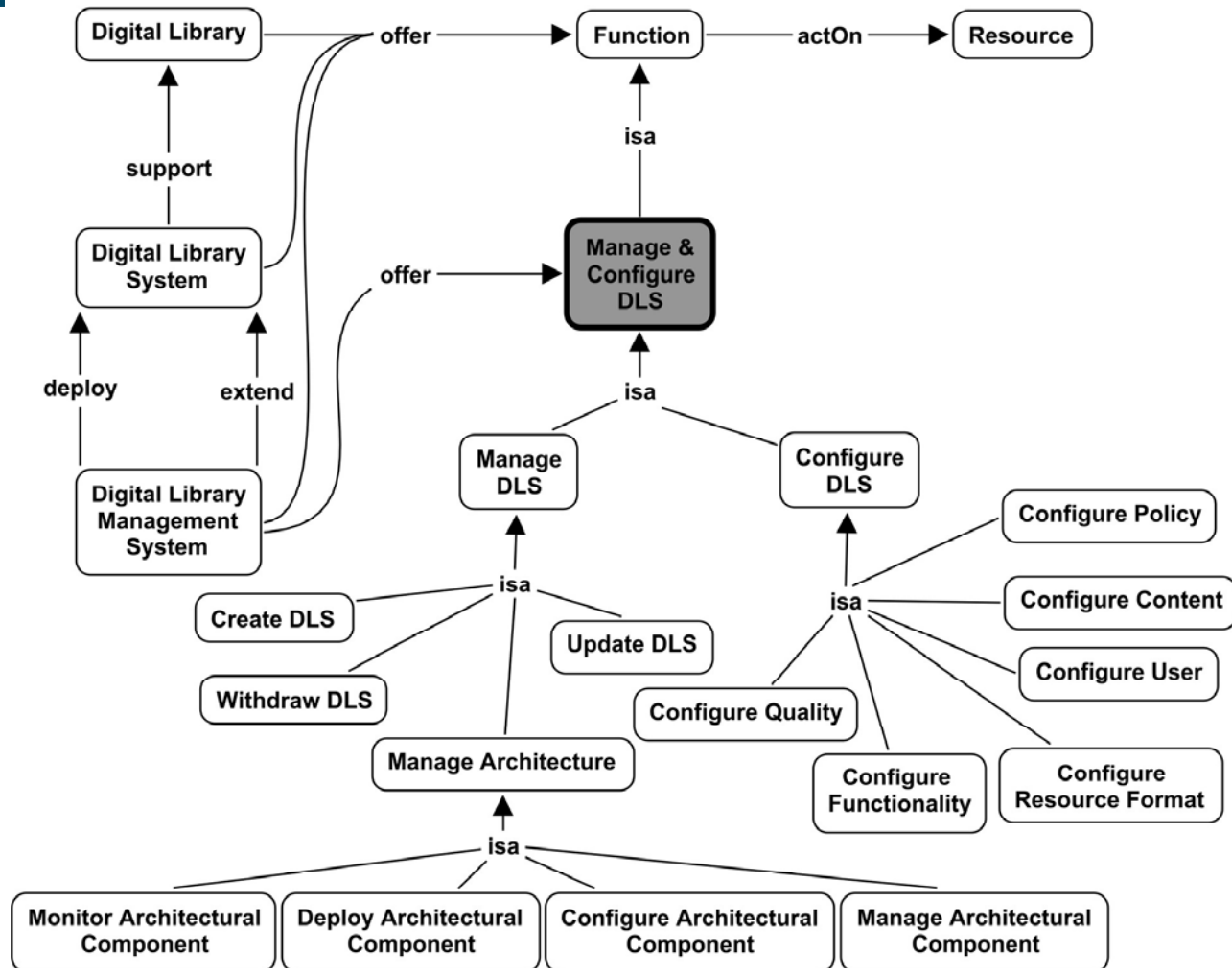
# Collaborate



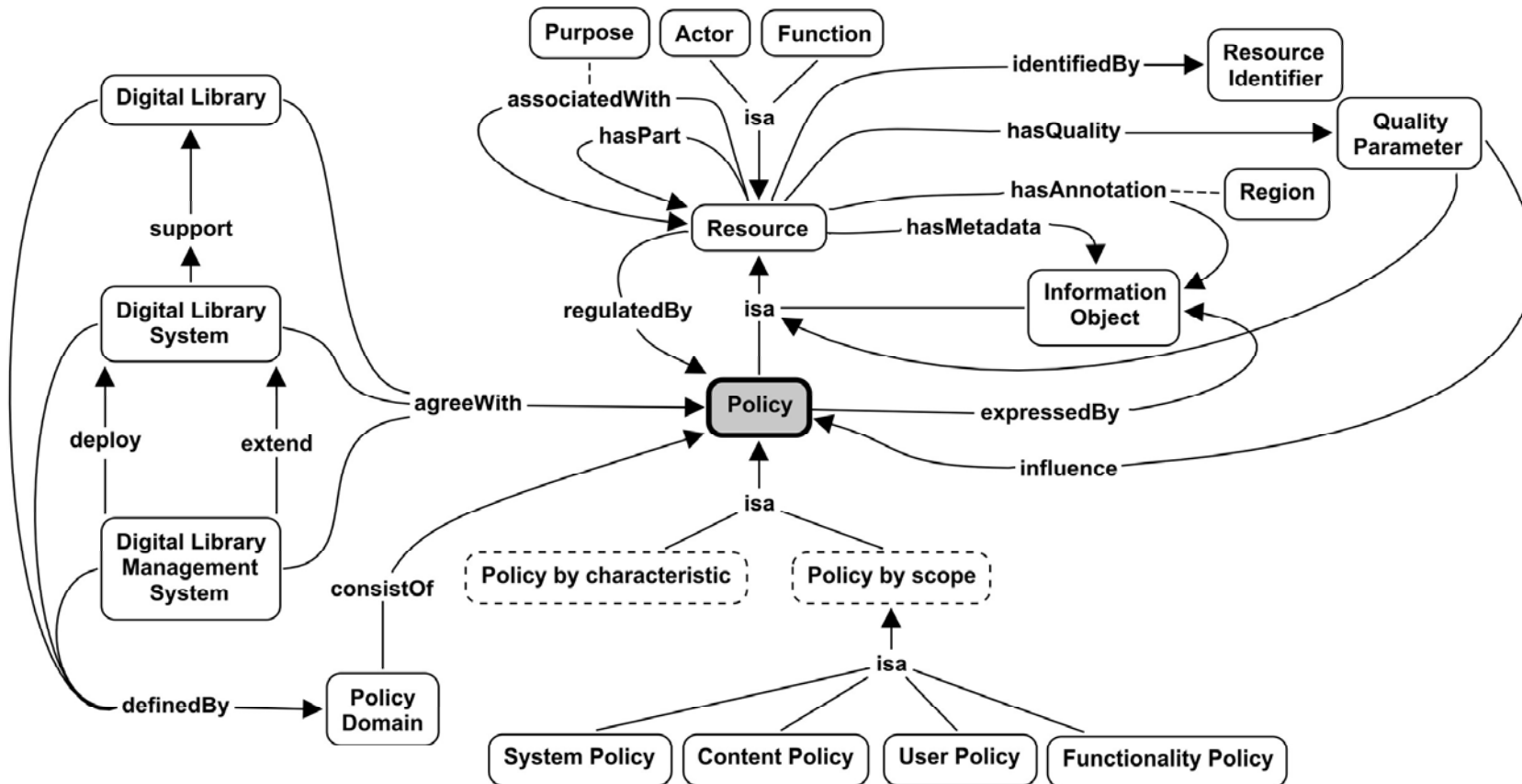
# Manage DL



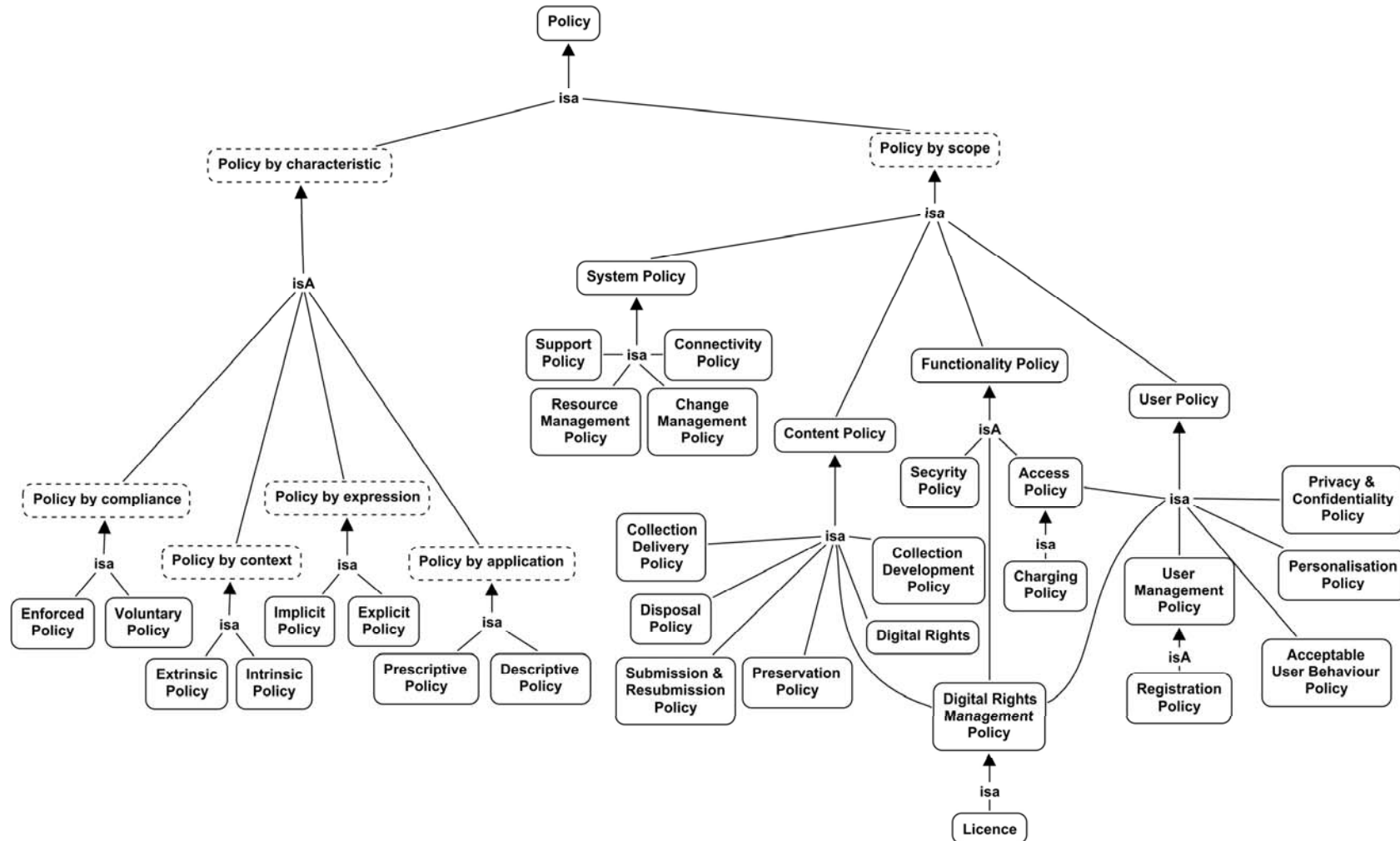
# Manage & Configure DLS



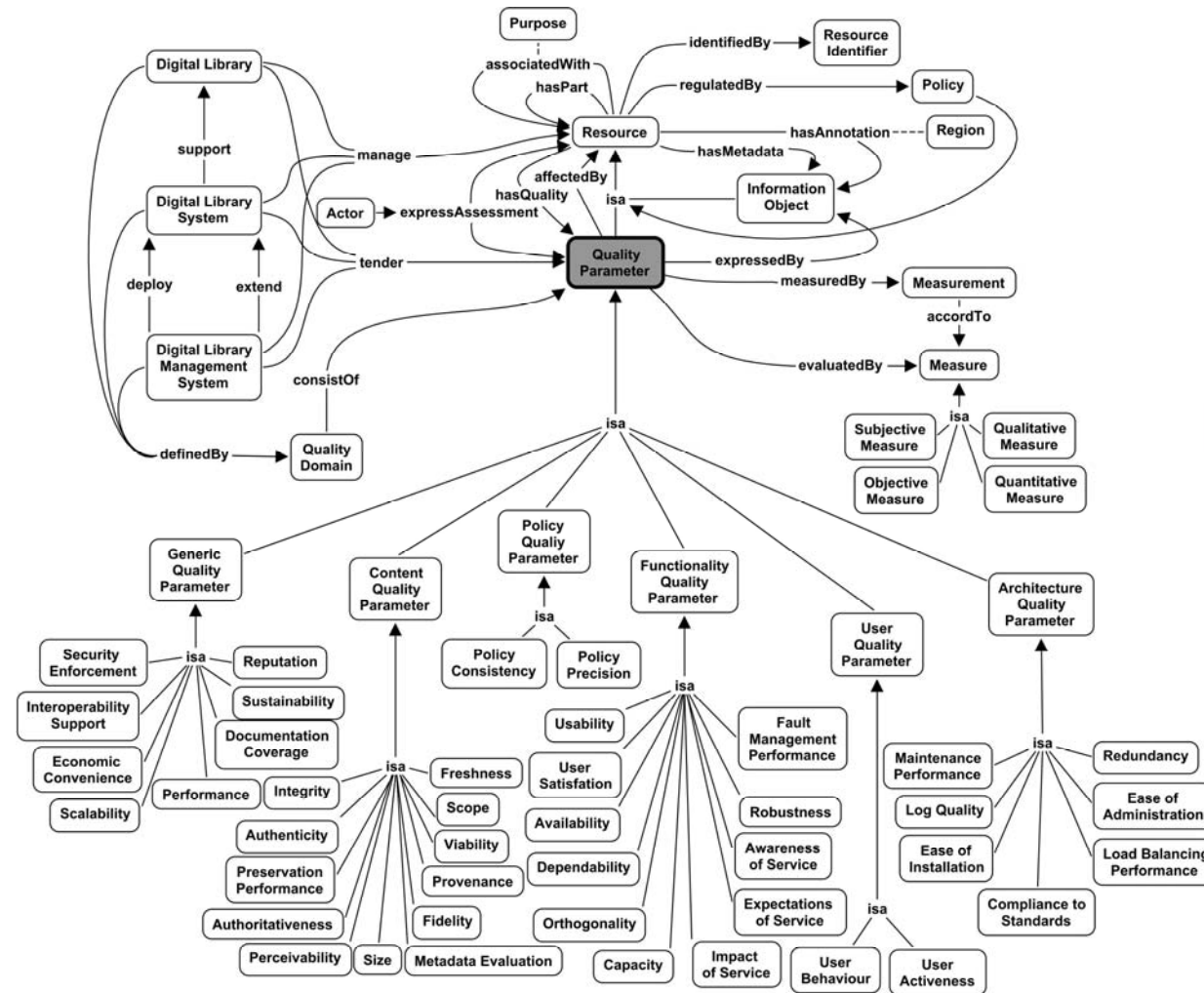
# The Policy domain



# Categorization of Policies

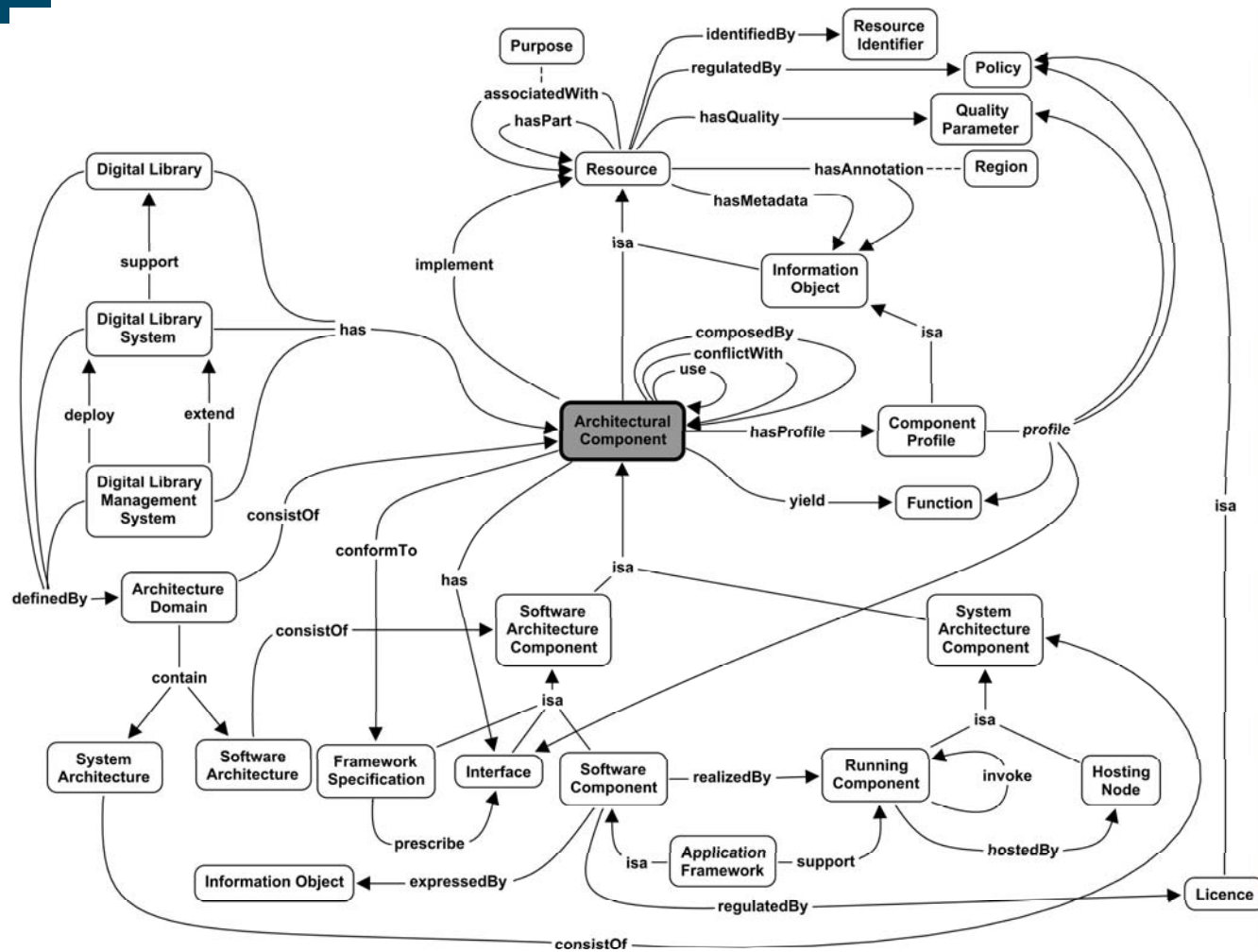


# The Quality Domain

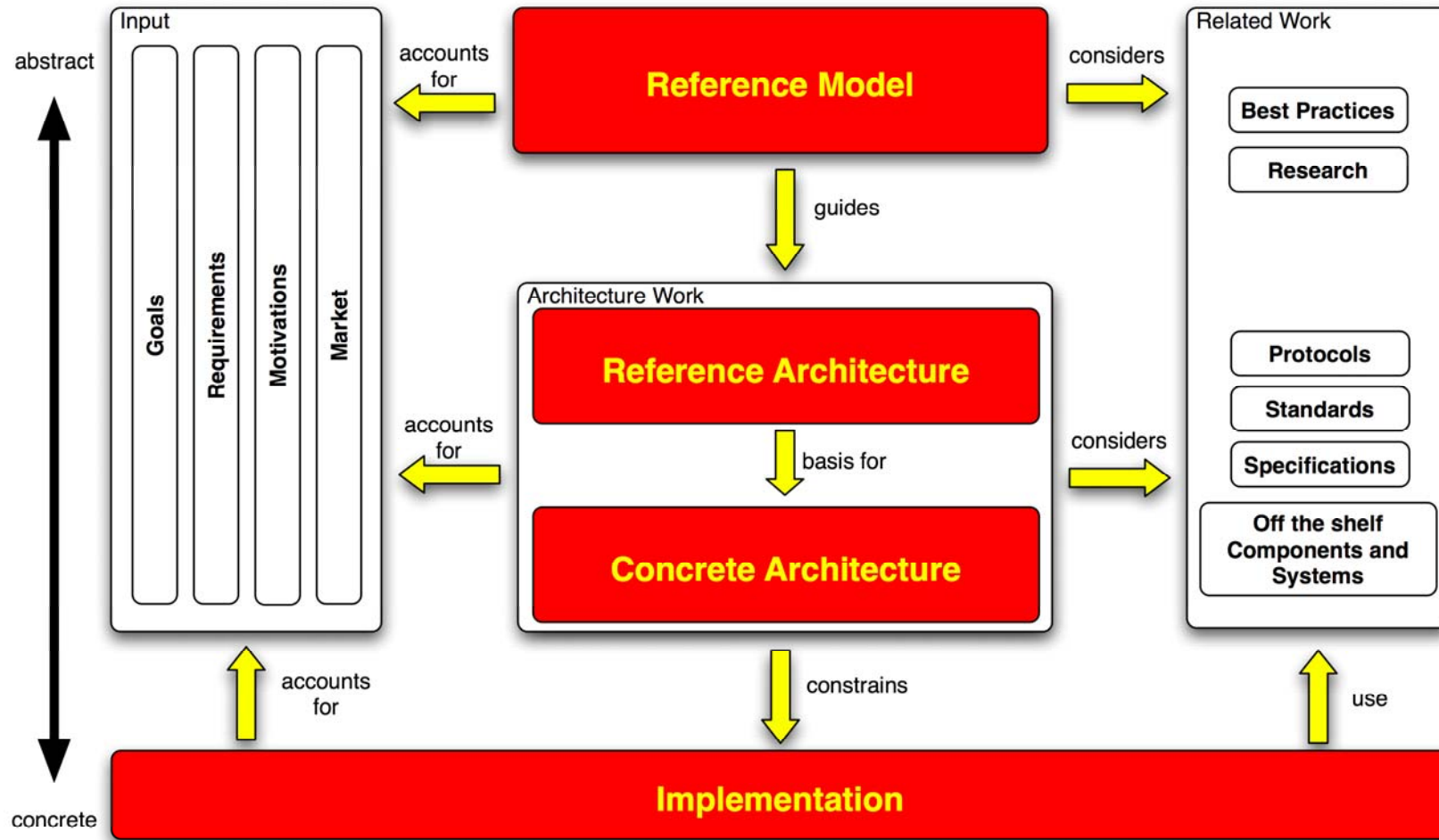




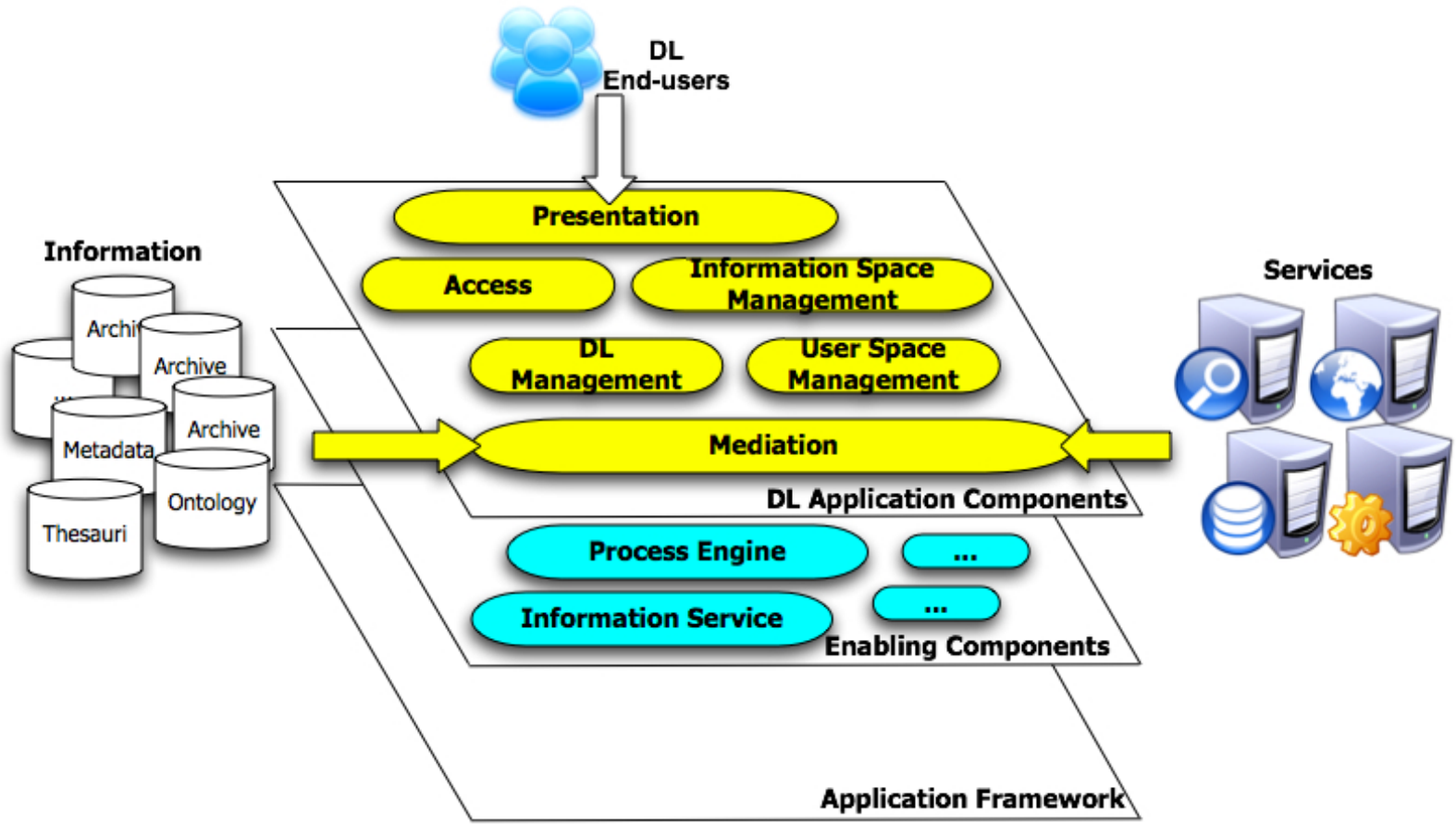
# The Architecture Domain



# The Digital Library Development Framework



# DLS Reference architecture



# DLS Concrete architecture

